

**PRE-BID M.O.M FOR SEATING ARRANGEMENTS WITH MODULAR WORK STATIONS  
AND CHAIRS IN CONNECTING PASSAGE ADJACENT TO ADITYA HPCS AT FIRST  
AND SECOND FLOOR, CCCR OFFUCE BUILDING AT IITM, PASHAN, PUNE-8.**

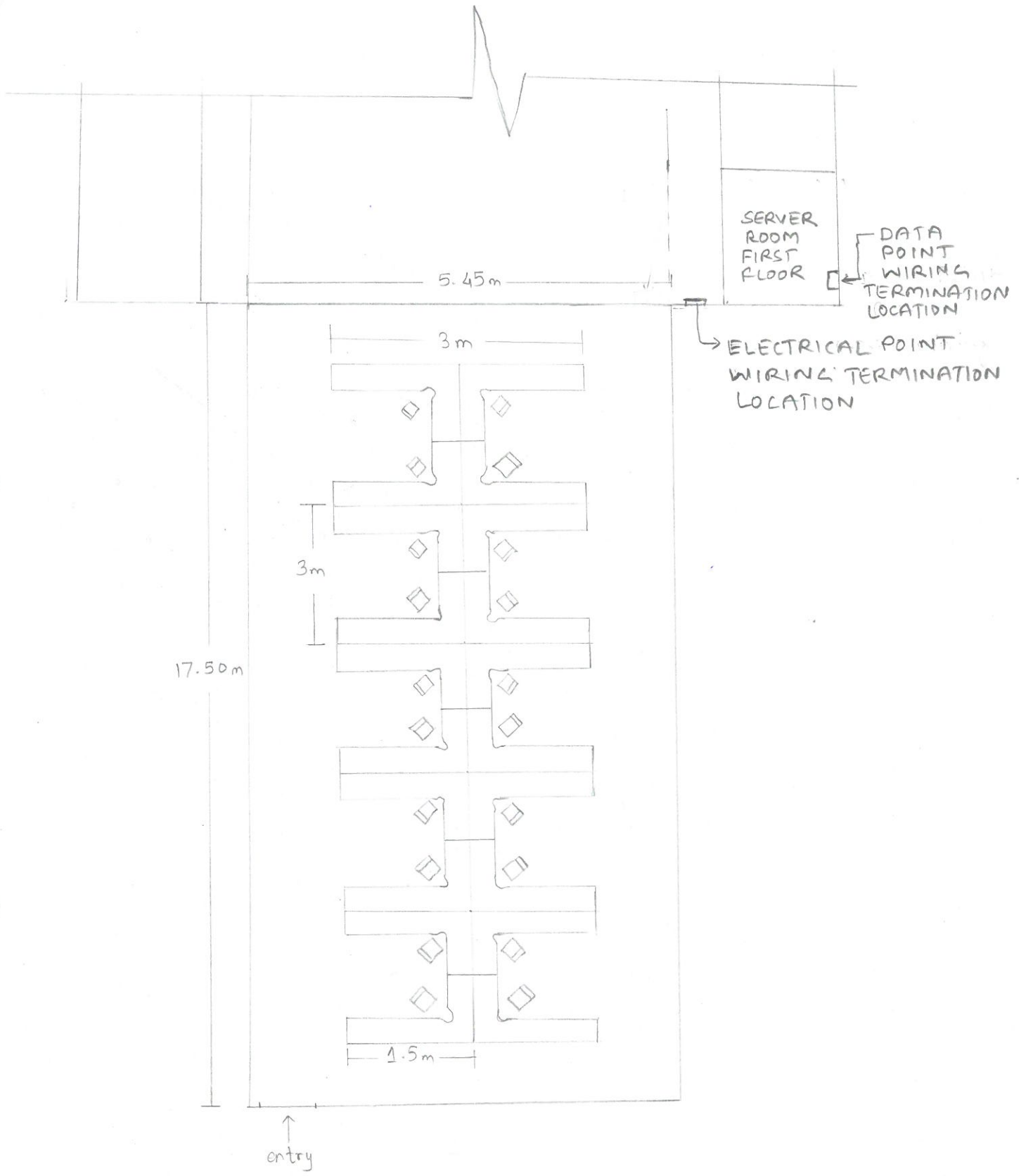
**TENDER NOTICE No. IITM/CE/WORKS/HPC-WS/2018-19/OT/06**

**A Pre-Bid Meeting for the subject work held 28.01.2019 at 15:00 Hrs in Aaryabhata hall at IITM, Pune. During the discussion with vendors present in the meeting the following decision were taken by the committee:**

<b>SL. No.</b>	<b>Points discussed</b>	<b>Reference</b>	<b>Decision Taken</b>
01.	SCOPE OF WORK	TENDER DOCUMENTS AND BOQ	Scope of work, tender documents details were explained to vendors present in the meeting.
02.	Tender BOQ item no. 6 and 7	TENDER DOCUMENTS AND BOQ	<p><b>FOR</b> : Partition: 50-70 mm thick <b>READ</b> : Partition: 70mm thick MS powder coated</p> <p><b>FOR</b> : Drawer pedestal: Made of both side laminated particle board <b>READ</b> : Drawer pedestal: Made of 18 gauge MS powder coated</p> <p><b>FOR</b> : Accessories: Powder coated CPU trolley, Articulated key board tray <b>READ</b> : Accessories: CPU trolley, Articulated key board tray of 18 gauge MS powder coated</p> <p><b>FOR</b> : Chair: any position tilt lock mechanism <b>READ</b> : Single lever tilt lock mechanism</p> <p><b>FOR</b> : Electrical &amp; Data point wiring <b>READ</b>: To be considered from work station up to termination point including, casing Patti, concealed floor raceways and necessary civil work and to match with existing surfaces. [Note: 1.For termination point locations; refer layout plan drawings as <b>Annexure-I</b> 2. For Data point wiring and Data server BOX additional details; refer <b>Annexure-II.</b>]</p>
03.	TENDER DOCUMENTS	TENDER DOCUMENTS AND BOQ	Vendors have to submit authorization letter of manufacturer/dealer of cubical in technical bid.
<b>NOTE: 1) Bidders should submit their bid as per Pre-Bid MOM and other terms and conditioned mentioned in tender will remain same.</b>			



Annexure-I



SEATING LAYOUT FOR FIRST FLOOR  
&  
SECOND FLOOR



### Annexure-II

Supply and installation of 42U Network Rack of Height: 42U, Depth: 900mm, Width: 600mm along with Two 48 port CAT6 Patch Panel along with cable Manager at location mentioned in drawing.

Two PDU of with Minimum 10 nos. of 5/15 amp socket.

Provision of Two 5/15 amp Electrical Socket board (UPS Power) for Network Rack.

Each workstation should have Two RJ46 CAT6 Data point along with necessary face plate.

Vendor has to supply & lay cable for each data point till the rack with necessary casing capping as per their proposed layout and cable should be terminated at patch panel.

Necessary marking has to be made both sides for identification of cables.

